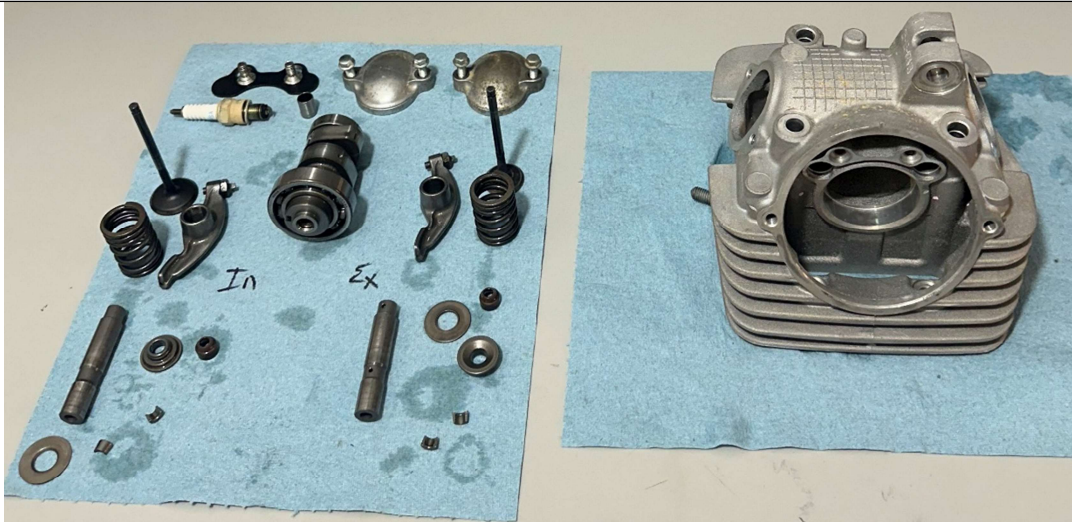


#1

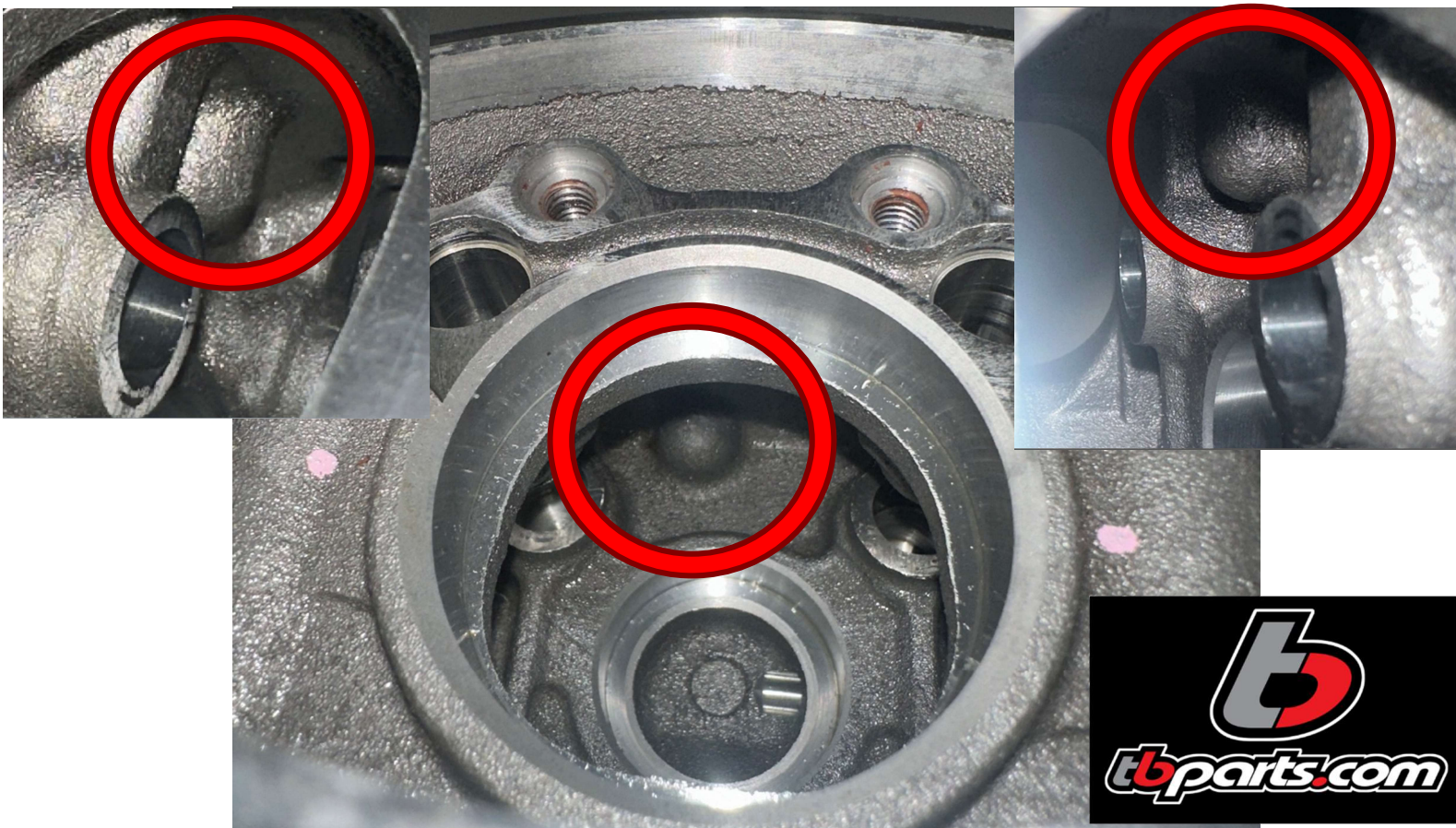
Disassemble cylinder head completely, removing **ALL** components.



#2

Locate notch inside cylinder head.

- located top center opposite of cam cover



#3

Using a tool as shown, shave down the notch.

- Anywhere from 2/3rds to flush with the surrounding walls will provide the clearance needed



#4

Once completed, **THOROUGHLY** clean inside the cylinder head to remove all metal shavings

- Note: any residual shavings left in cylinder head may cause damage

