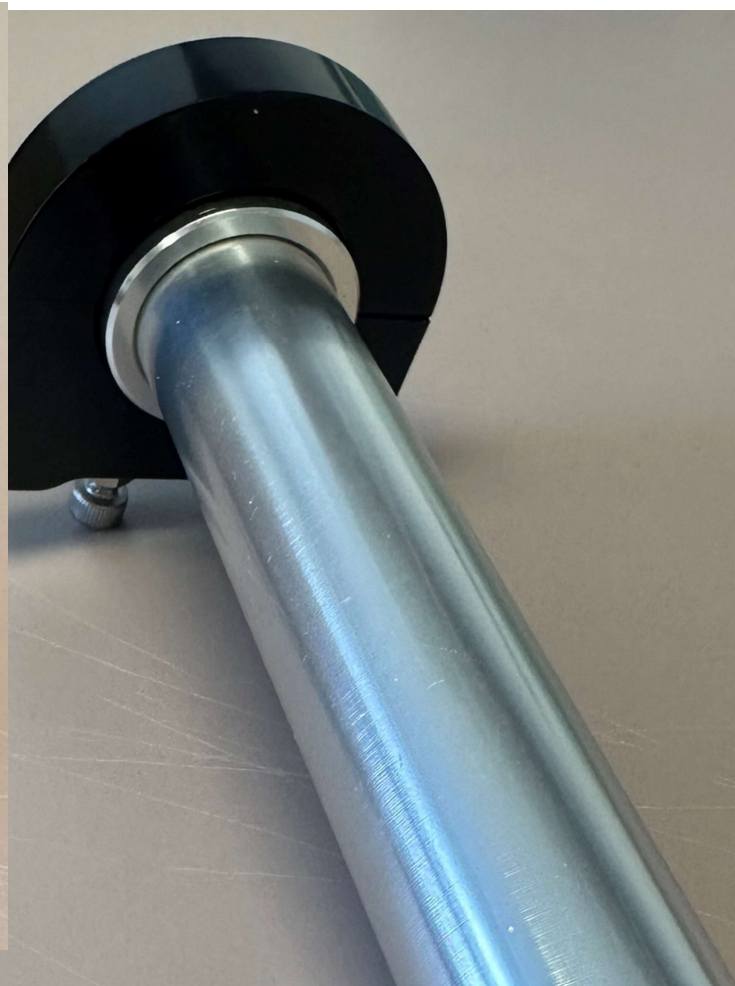


How to install cable with Billet Throttle



#1

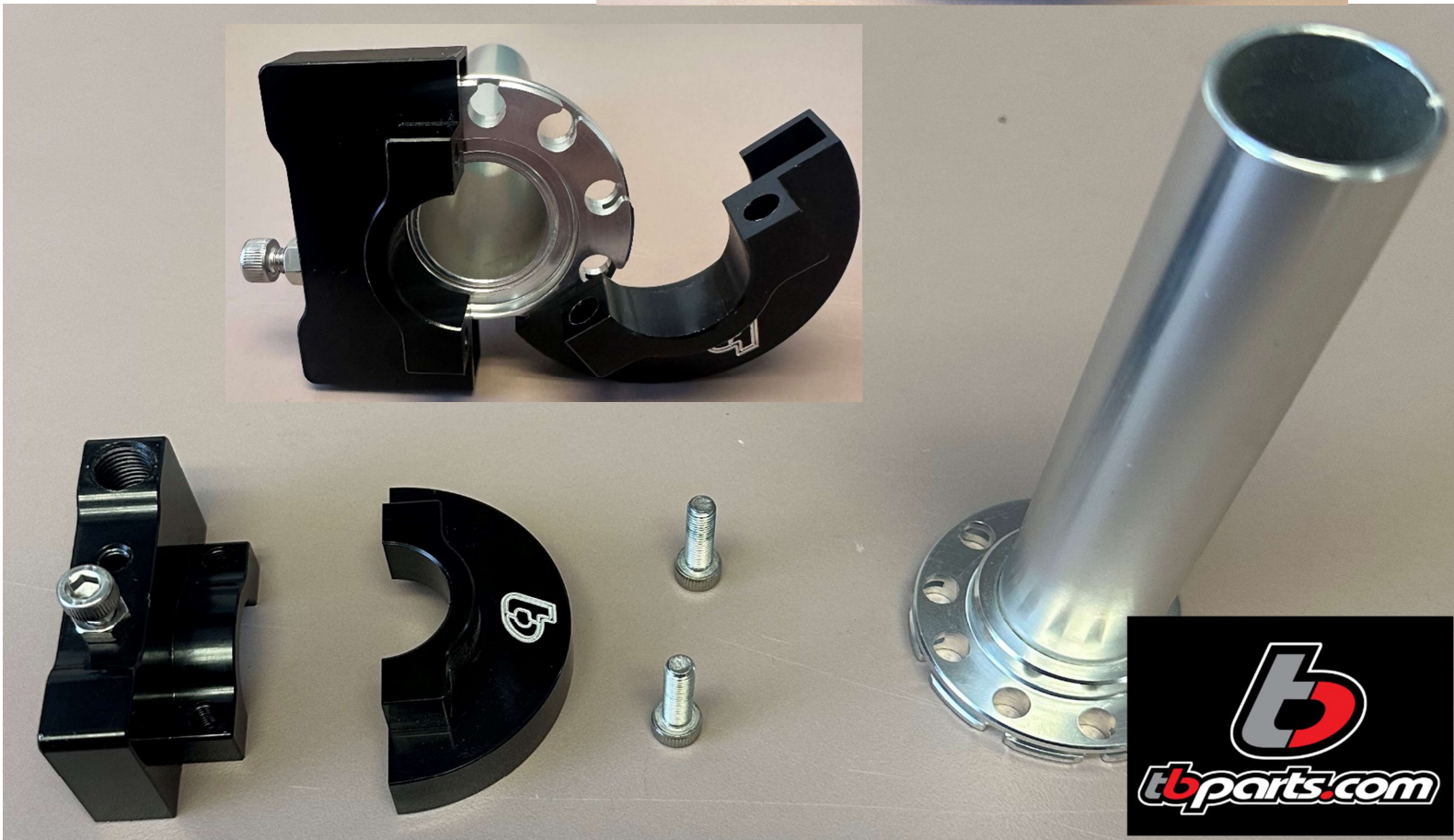
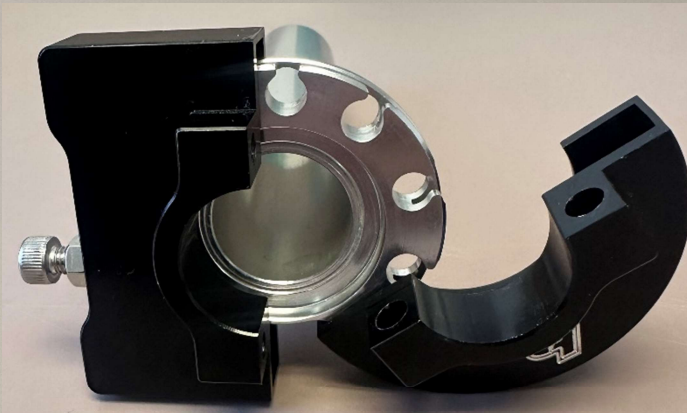
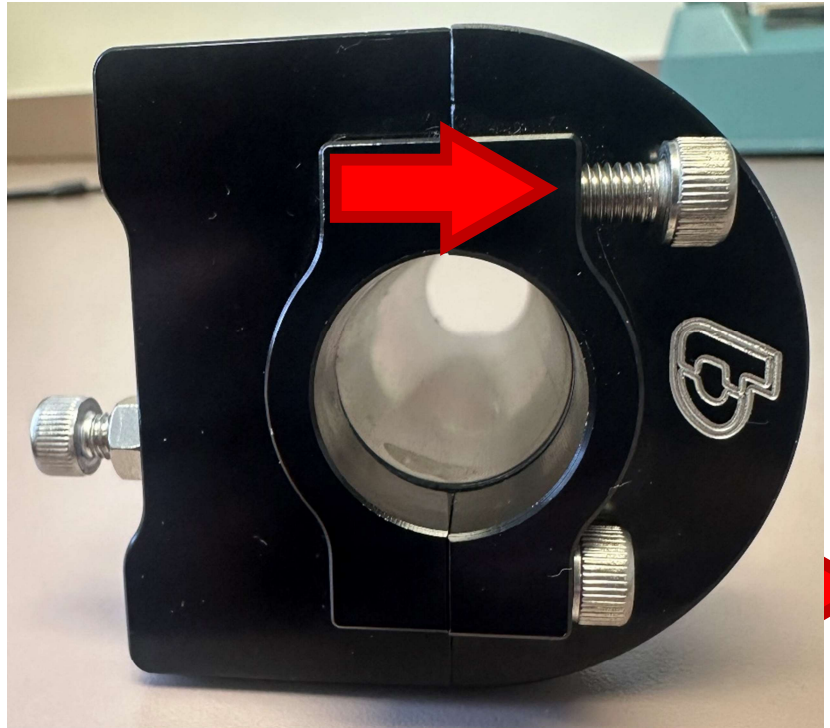
Start by attaching the corresponding end of the throttle cable to the carburetor slide.

- When attached, aligned slide grooves with indicators and secure top down



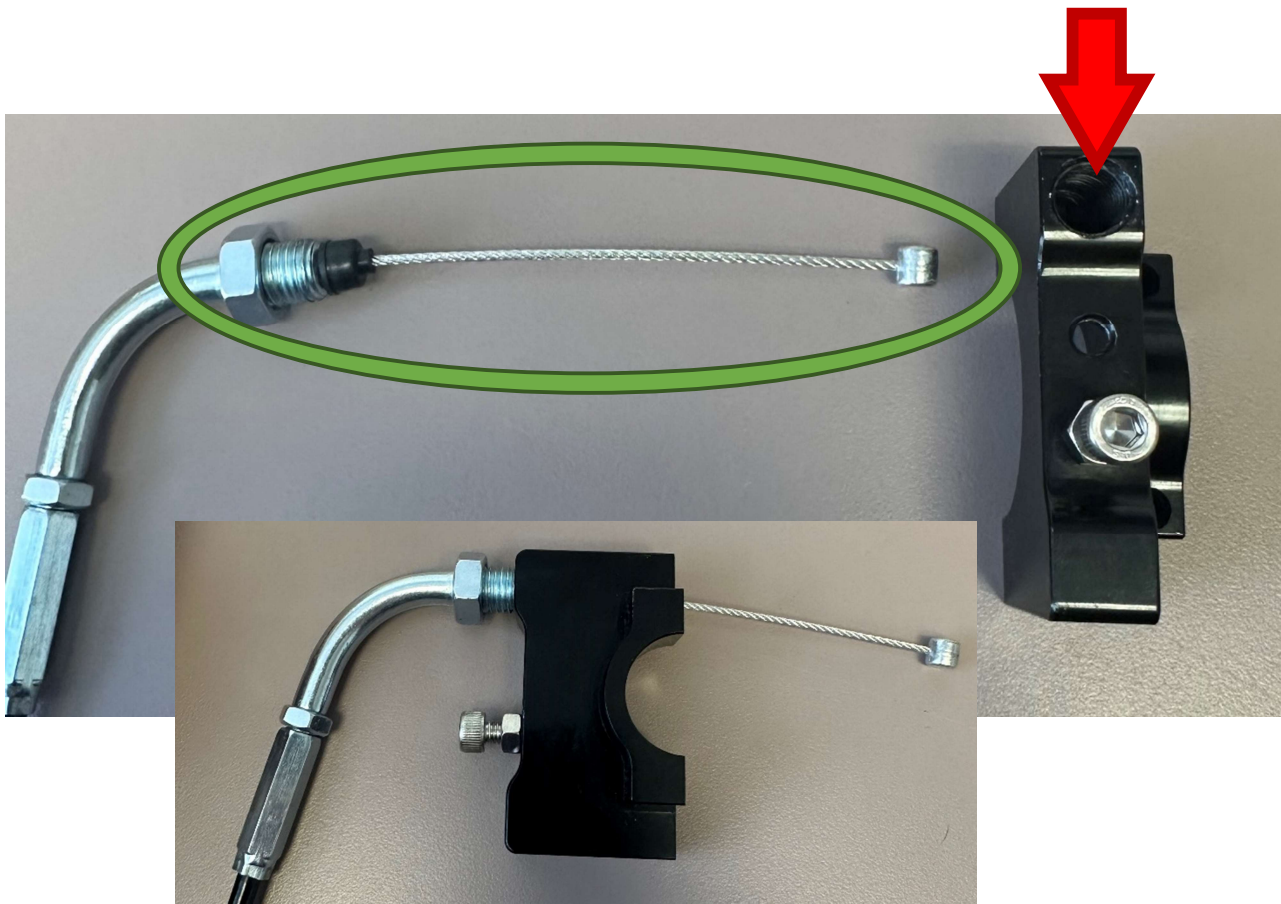
#2

Separate the throttle.



#3

With the threaded end of cable in hand, run the exposed throttle cable through the treaded opening.



#4

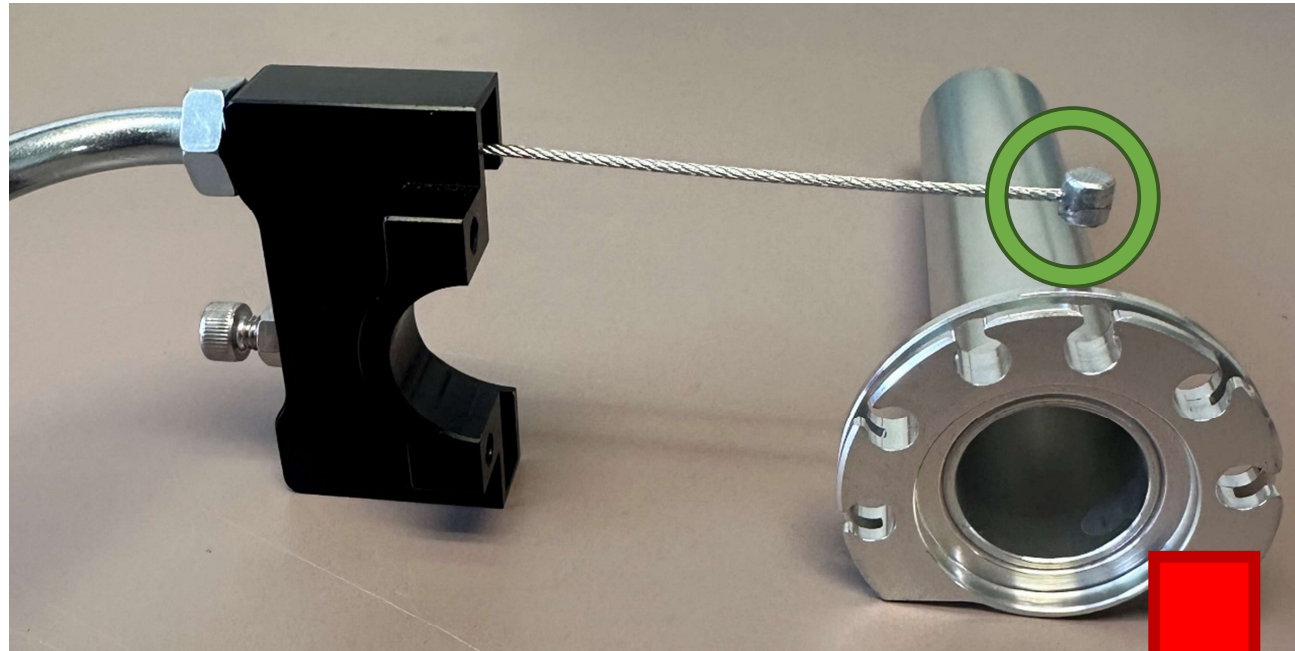
Thread the cable in.



#5

Attach the barrel end of the cable to the throttle tube.

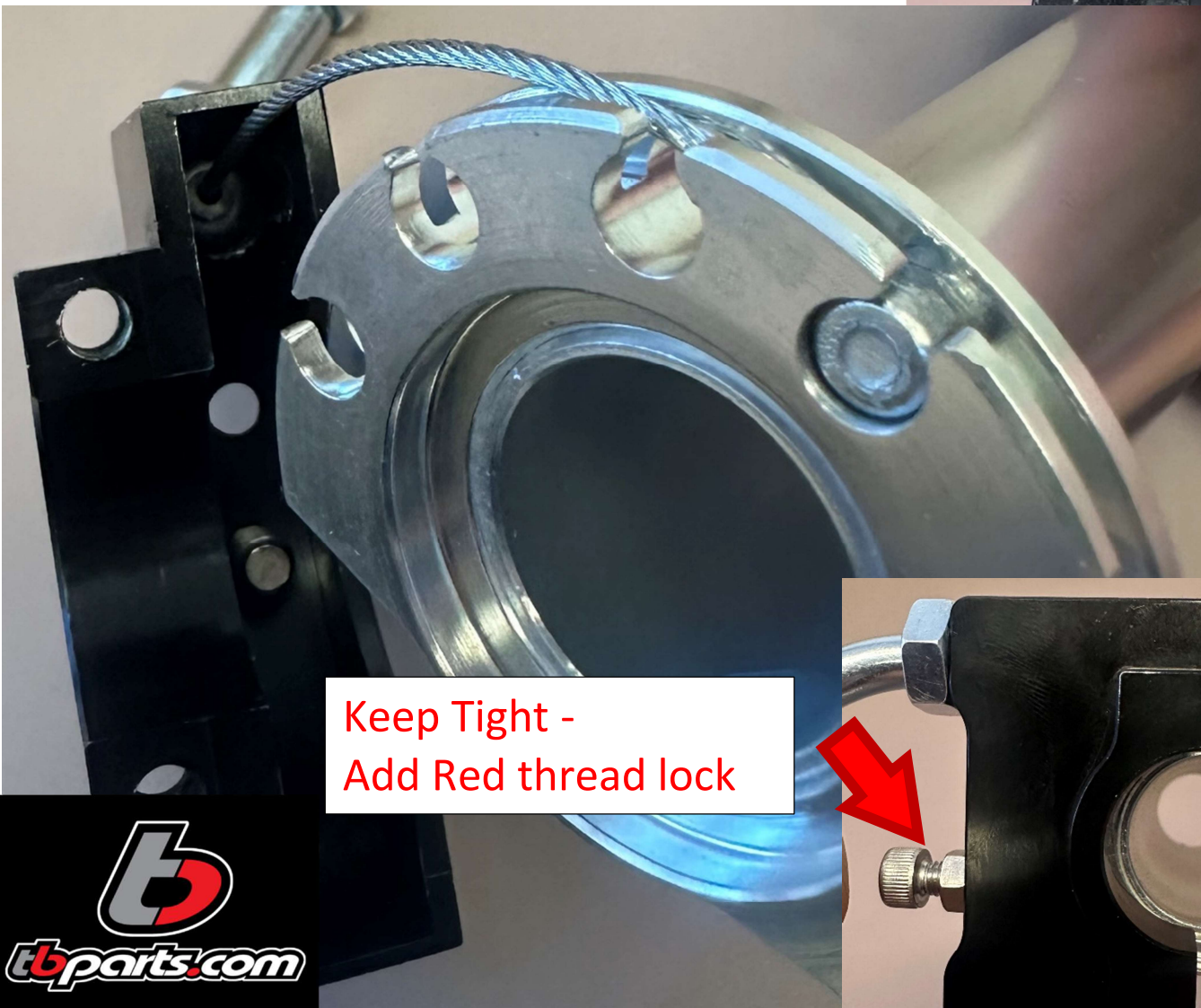
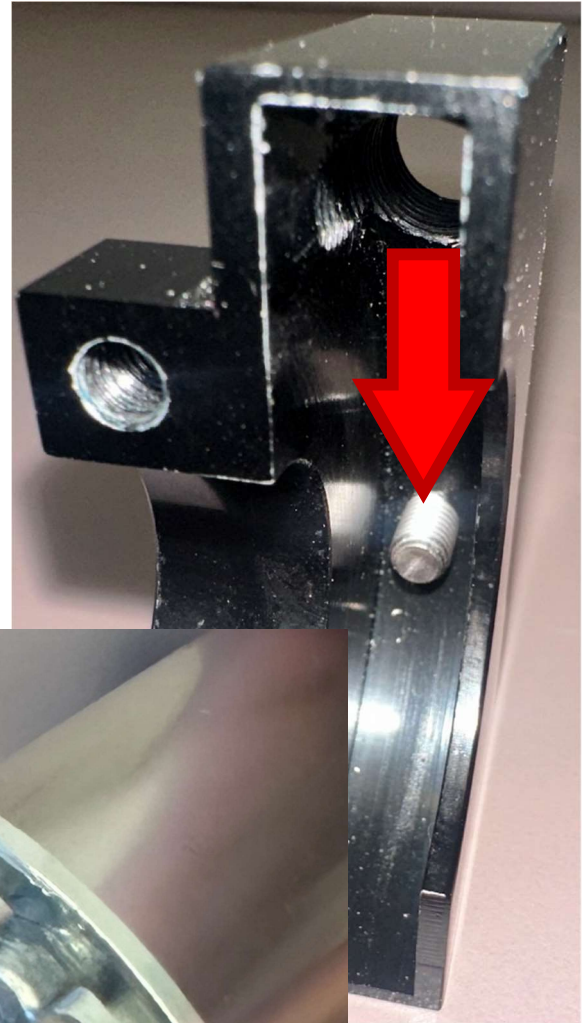
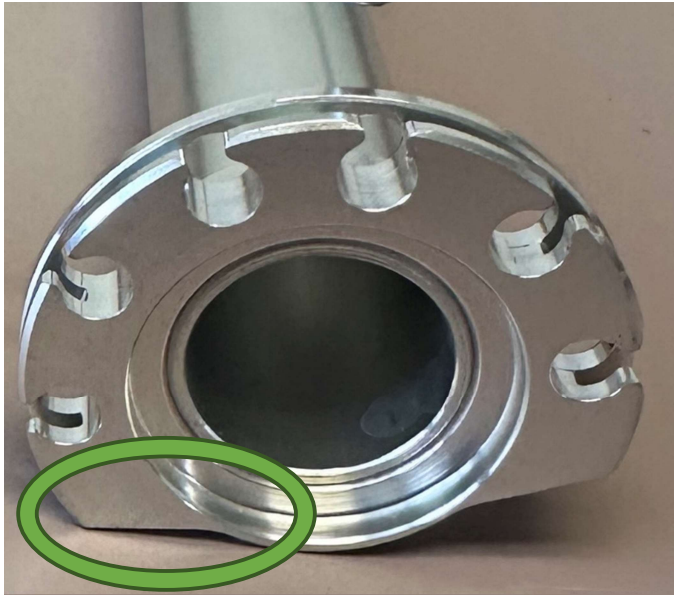
- Start with the 3rd, 4th, or appropriate notch



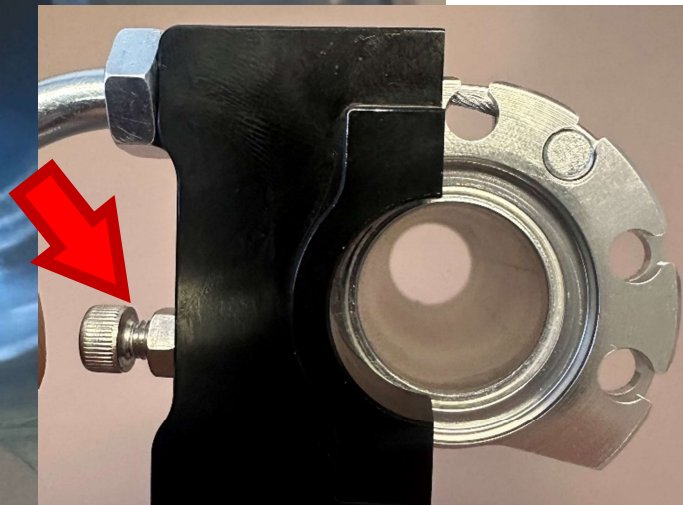
#6

Rest the flat part of the throttle on top of the safety stop bolt.

- Use the cable to help guide it in place

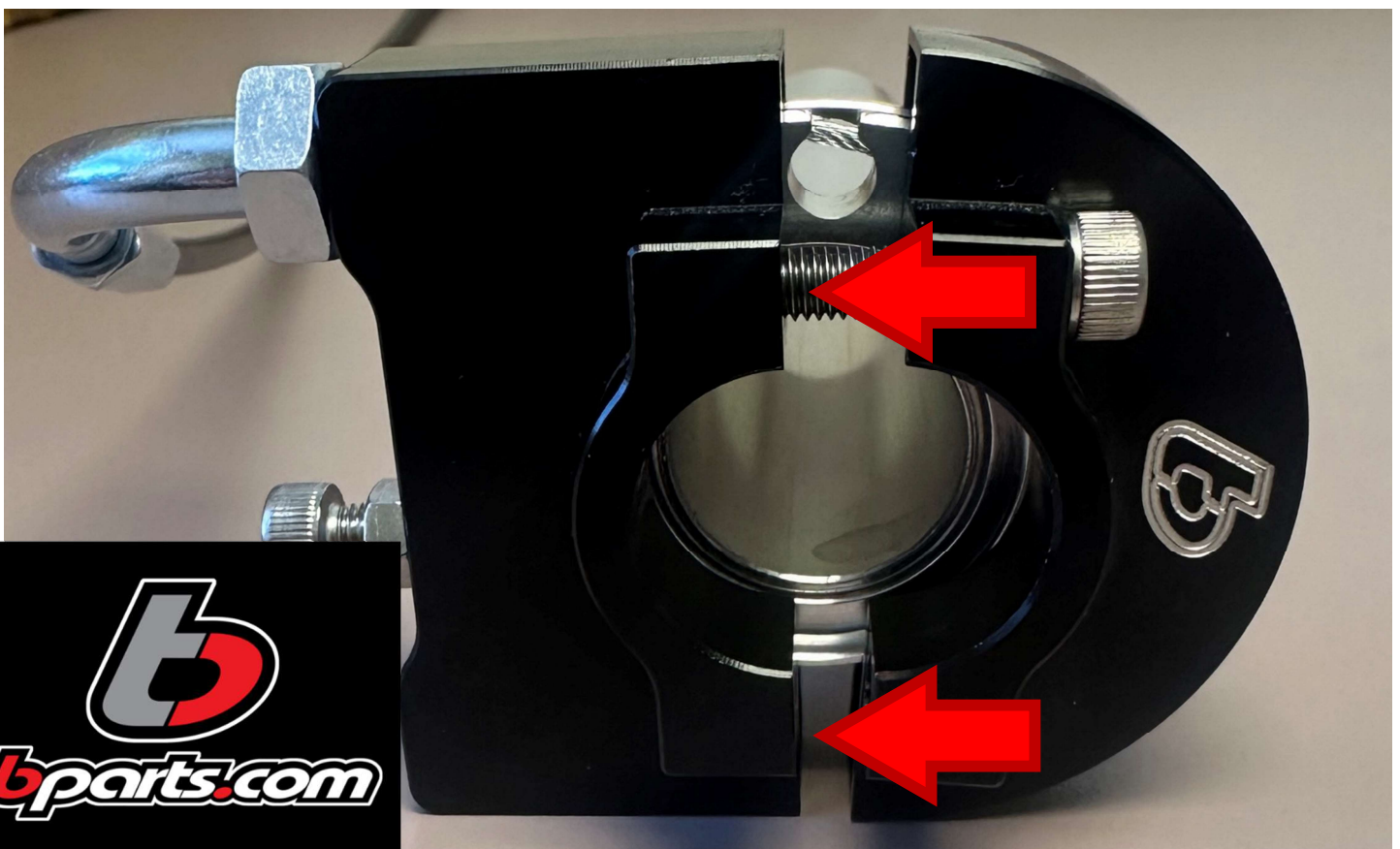
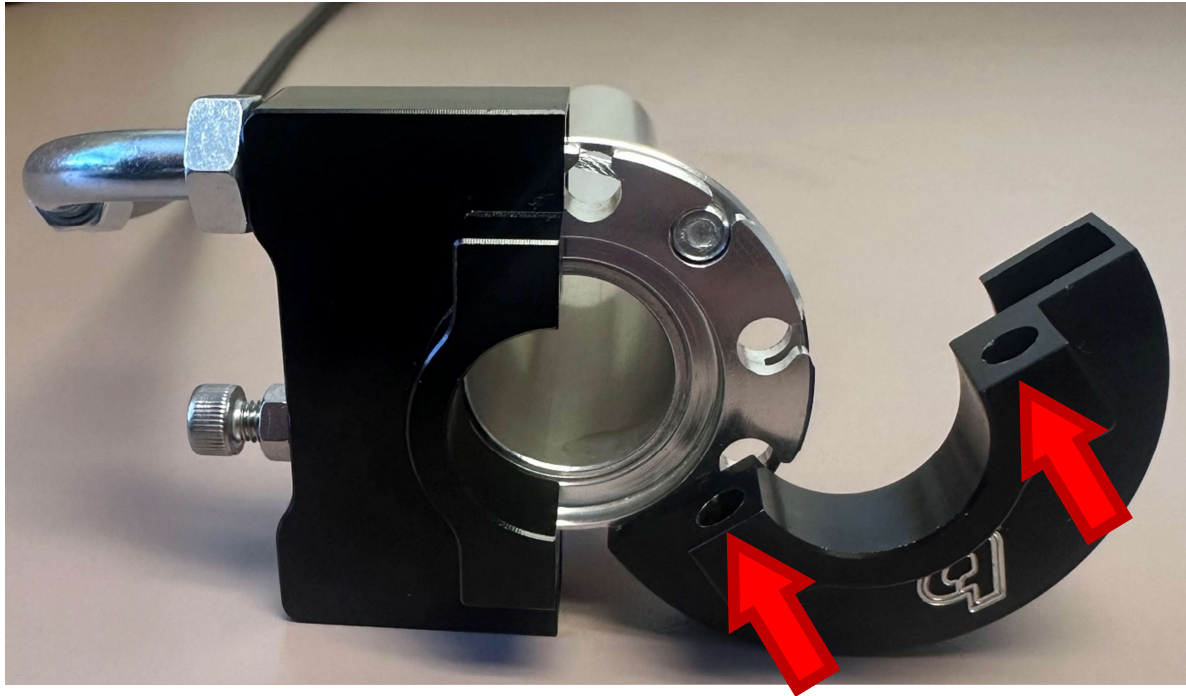


Keep Tight -
Add Red thread lock



#7

Once in place, align cover billet piece with corresponding bolt holes.



#8

Insert bolts and tighten.

